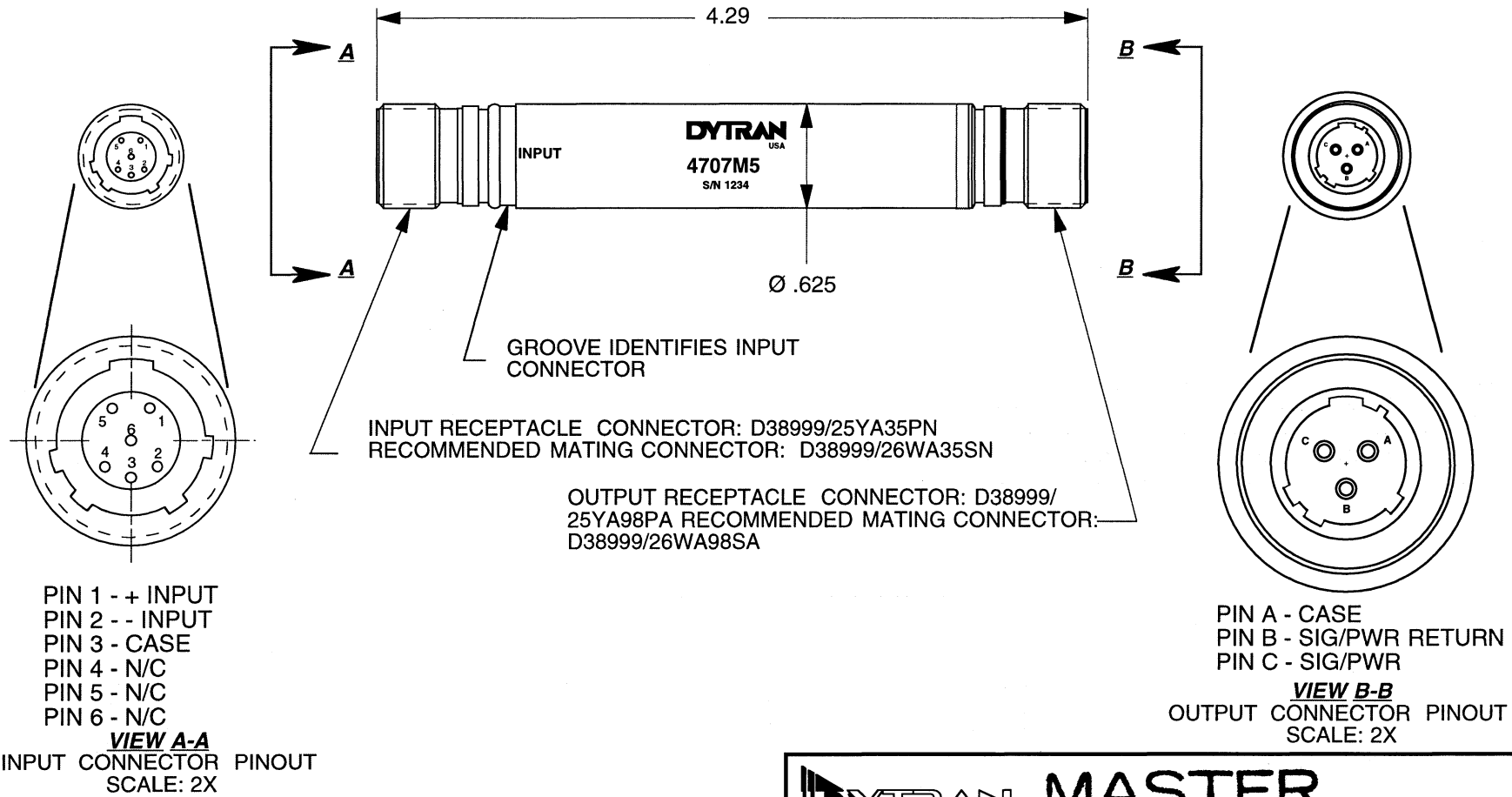


REV	ECN	DESCRIPTION	BY/DATE	CHK	APP
B	5932	SEE ECN	RA 04/20/09	<i>[Signature]</i>	<i>[Signature]</i>



1 THREAD MUST BE \perp TO SURFACE 'A' WITHIN .001 TIR.

ALL PART NUMBER LETTER SUFFIXES ARE TO BE INTERPRETED AS FOLLOWS:
I.E. - 107-0000-01ⓧ

M - MACHINED ONLY (UNPLATED) G - MATERIAL HAS BEEN GRAINED
P - PLATED/PAINTED S - MATERIAL HAS BEEN SAWCUT
H - HEAT TREATED E - ENVIRONMENTAL TEST

EXCEPT AS OTHERWISE NOTED	
ALL DIMENSIONS IN INCHES TOLERANCE: .xxx = ± .005 .xx = ± .01	
SURFACE FINISH EXCEPT AS NOTED	63 ✓
BREAK EDGES TO DEBURR RADIUS OR CHAMFER	.003
1 THESE DIAS Ⓞ TO	.003 T.I.R.
FILLETS -	.005 MAX RAD.

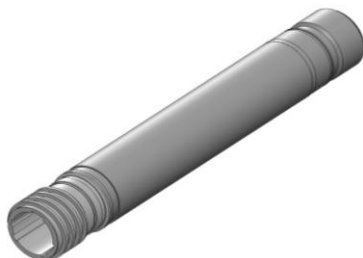
DYTRAN INSTRUMENTS, INC.		MASTER ONLY IF IN RED		CHATSWORTH, CA.	
SCALE	1X	REV	DATE	ECN	
		SEE REV BLOCK	SEE REV BLOCK	SEE REV BLOCK	
DATE	8/12/08	PART NO.	MODEL 4707M5		
DRAWN	N.C.	CHECKED	DV.		
APPROVED	ANS	DATE	8/12/08	NEXT ASSEMBLY	USED ON
					4707M5
TITLE				DWG NO.	
OUTLINE/INSTALLATION DRAWING, MODEL 4707M5 DIFFERENTIAL INPUT CHARGE AMP.				127-4707M5	
				SHEET 1 OF 1	

PERFORMANCE SPECIFICATION

ENGLISH VERSION

DYTRAN 4707M5

06 May 16
Rev C ECN 12643



CHARGE AMPLIFIER DIFFERENTIAL

		Units	Minimum	Typical	Maximum
PHYSICAL					
Weight		grams		68	
Size	Diameter	inch		0.625	
	Length	inch		4.48	
Connector (Input)	Type		D38999/25YA35PN Receptacle		
mates with	Type		D38999/26WA35SN Plug		
Connector(Signal/Power)	Type		D38999/25YA98PA Receptacle		
mates with	Type		D38999/26WA98SA Plug		
Housing	Material		Stainless Steel		
	Isolation		Case Connected to Pin A of the Signal/Power Connector		
Seal			Hermetic		

PERFORMANCE, room temperature

Sensitivity		mV/Pc	0.045		0.055
High Frequency Range, -5%		Hz		15000	
-3dB		Hz		50000	
Low Frequency Range, -5%		Hz		5	
-3dB		Hz		1.6	5
Bias Voltage		VDC	7		9
Output Impedance		Ω		100	
Output Voltage Swing		Vpeak	5		
Allowable Source Capacitance		pF			10000
Discharge Time Constant		Seconds	0.1		

ENVIRONMENTAL

Operating Temperature		°F	-40		150
Coefficient of Thermal Sensitivity		%/°F		0.04	
Vibration		g pk			500
Shock		g pk			1000

POWER REQUIREMENT

Compliance Voltage		VDC	15		24
Constant Current		mA	4		20

ACCESSORIES SUPPLIED:

NONE