

MC3A-100 SPECIFICATIONS

The MC3A is a compact, six-axis transducer with rectangular, bolt-ready top and bottom surfaces.



Units: English Capacity: 100

Dimensions (WxLxH)	3 x 3 x 3 in		
Weight	2 lb.	Sensing elements	Strain gage bridge
Channels	Fx, Fy, Fz, Mx, My, Mz	Amplifier	Required
Top plate material	Aluminum	Analog outputs	6 Channels
Temperature range	0 to 125°F	Digital outputs	None
Excitation	10V maximum	Crosstalk	< 2% on all channels
Fx, Fy, Fz hysteresis	± 0.2% full scale output	Fx, Fy, Fz non-linearity	± 0.2% full scale output

Channel	Fx	Fy	Fz	Units	Mx	My	Mz	Units
Capacity	50	50	100	lb	100	100	50	in-lb
Sensitivity	24	24	6	µv/v-lb	30	30	24	µv/v-in-lb
Natural frequency	-	-	-	Hz	-	-	-	Hz
Stiffness (X 10 ⁵)	0.12	0.12	1.7	lb/in	-	-	0.2	in-lb/rad

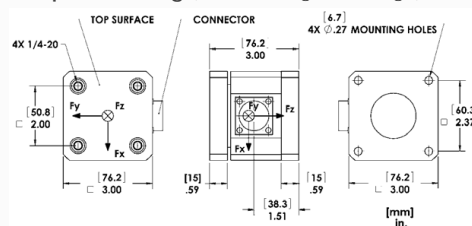
Resolution *To determine the resolution of your system, please use our [Output Calculator](#).*

Published specifications subject to change without notice.

Last modified:10/22/201

TECHNICAL DRAWINGS

Footprint Drawing (click on image to enlarge)



Electrical Drawing (click on image to enlarge)

